



TYPE: TELSHACK-B-JR



TELSHACK-B-JR Wireless Crosby™ Bow Load Shackle

Description

The TESHACK-B-JR range of telemetry load shackles are manufactured using the Crosby™ G2130 shackle. Suitable for use in a wide range of lower capacity industrial weighing applications, these load shackles are accurate, reliable and simple to install. They are particularly popular in theatrical applications for measuring the loads on rigging, hoists and stage lifts.

The IP67 rated telemetry housing is manufactured from ABS plastic making it strong yet light, and the telemetry electronics contained within are powered by two AA alkaline batteries. The unit also features an internal antenna for maximum protection from damage.

The TESHACK-B-JR is supplied as standard without any additional wireless devices to enable greater flexibility with the configuration and ordering of the product. The TESHACK-B-JR can be used with any of the T24 range of wireless instrumentation, whether this be for a simple display system using the T24-HS-LS, or more complex systems using multiple load cells and multiple wireless devices.

For more sophisticated systems, including datalogging or monitoring/reporting requirements, we are able to offer a robust tablet PC with installed software for use with single or multiple load cell installations. Our sales team will be happy to discuss the best wireless system configuration to suit your requirements.

The TESHACK-B-JR series can be provided as shown in this datasheet or can be modified to meet a particular application requirement. We are always pleased to discuss any special requirements that can be accommodated.

Specification

Rated load (tonnes)	3.25, 4.75, 6.5, 9.5
Proof load	150% of rated load
Ultimate breaking load	500% of rated load
Non-linearity	<±1% of rated load (typically)
Non-repeatability	<±0.1% of rated load
Transmission distance	Up to 600 metres (clear line of sight)
Battery life	>650 hours typically (continuous use with 2.3Ah batteries)
Battery	2 x AA Alkaline
Operating temperature range	-20 to +55°C
Environmental protection level	IP67
Telemetry housing	ABS plastic
Approvals	European Machinery Directive 2006/42/EC

Available Options

- Special ranges and capacities
- Integral signal conditioning
- Longer battery life with different transmission rate settings (1 update per second extends battery life to 2000 hours)
- Multiple load cell systems
- Tablet PC option with data logging and other customised features
- Various wireless accessories and options are available. Consult our technical team and/or refer to the T24 range of wireless products

Features

- Ranges from 3.25 to 9.5 tonnes
- Stainless steel load pin
- Environmentally sealed to IP67
- Simple installation and operation
- Shackle and load pin fully certified
- Supplied with load centralising bobbin
- Many other options available
- Machinery Directive 2006/42/EC compliant

Typical Applications

- Rigging/Hoist monitoring
- Vessel weighing
- Cable tension monitoring
- Lift/stage weighing/monitoring
- Vehicle testing



TELSHACK-B-JR Wireless Crosby™ Bow Load Shackle

Special Options

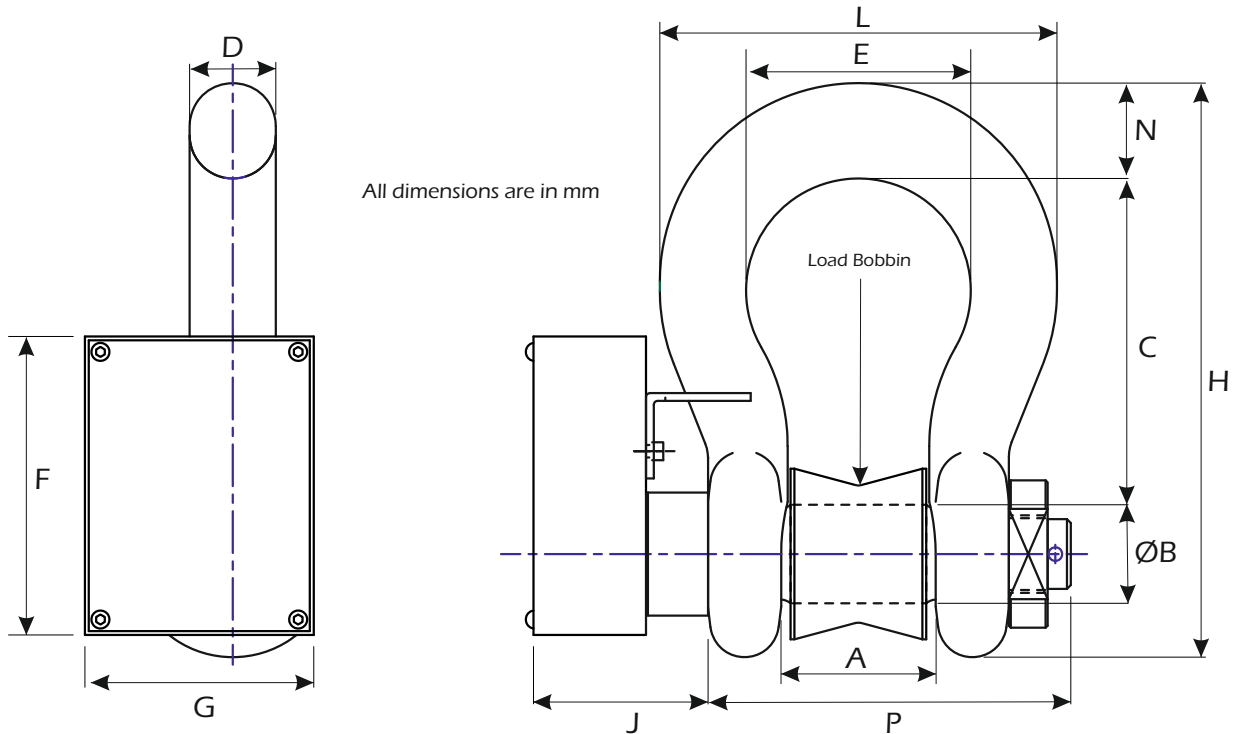
Special ranges

The TELSACK-B-JR can be supplied in any range, between 3.25te and 9.5te and calibrated as required. Usually we will choose the nearest standard shackle size.

Multi-shackle systems

It is possible with the T24-HA handheld telemetry display to use up to 12 shackles with a single handheld. Each shackle is paired with the handheld and can be used to view individual load cells or summated load cells. These values can be sent to a printer or a PC.

Dimensions

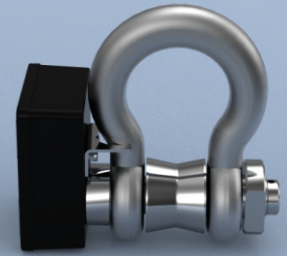


Rating (tonnes)	A	ØB	C	D	E	F	G	H	J	L	N	P	Weight (kgs)	Resolution (tonnes)
3.25	27	19.1	60.5	16	42.9	77	59	106	41	74.6	17.5	73	0.62	0.01
4.75	31.8	22.4	71.5	19.1	51	77	59	126	41	89	20.6	83	1.23	0.01
6.5	36.6	25.4	84	22.4	58	77	59	148	45	102	24.6	94	1.79	0.01
9.5	46	31.8	108	28.9	74	59	77	190	54	131	31.8	119	3.75	0.01

A summary of available wireless devices that can be used to enhance the AWLL in your application can be viewed on the next page of this datasheet.

For further assistance on system configuration, please call us or email your requirements to sales@lcmssystems.com.

TELSHACK-B-JR Wireless Crosby™ Bow Load Shackle



Wireless Receivers/Display Options



T24-HS-LS
Simple wireless display for connecting to 1 load cell



T24-HA
Wireless display for connection to up to 12 load cells



T24-HR
Wireless display for connecting to multiple load cells



X24-HD
ATEX Wireless display for connection to up to 24 load cells

Wireless Base Station Options



T24-BSu
Wireless USB connected base station



T24-Bsd
Wireless compact USB connected dongle base station



T24-BSue
Wireless USB extended range base station



T24-BSi
Wireless USB, RS485, RS232 connected base station

Wireless Output Module Options



T24-RM1
Wireless relay switch output module



T24-SO
Wireless serial ASCII output module



T24-AO1
Wireless analogue output module



T24-PR1
Wireless surface mounting tally roll printer



T24-AR
Wireless range extender repeater module

Wireless Software Options



LCM Systems are able to offer various software solutions for our wireless range of load cells. We encourage you to speak to our sales team to discuss any standalone software requirements you may have.

The solutions we regularly offer include centre of gravity weighing and reporting, multiple load cell display & reporting and PC based datalogging. Other solutions can also be offered.

For more detailed information regarding wireless instrumentation visit www.lcmsystems.com/T24

SCIENCE GATE
Your Automation Partner



SCIGATE AUTOMATION (S) PTE LTD
No 1 Bukit Batok Street 22 #01-01 Singapore 659592
Tel: (65) 6561 0488 Fax: (65) 6561 0588
Email: sales@scigate.com.sg Web: <https://scigate.com.sg/>
Business Hours: Monday - Friday 8:30AM - 6:15PM

www.lcmsystems.com

LCM Systems Ltd

Unit 15, Newport Business Park, Barry Way
Newport, Isle of Wight PO30 5GY UK
Tel: +44 (0)1983 249264
sales@lcmSystems.com
www.lcmSystems.com

LCM Systems (România)

Strada Ștefan Cel Mare 26a,
Tunari, cod.077180, Ilfov, România
Tel: +40 (0)77 4641899
ro@lcmSystems.com
www.lcmSystems.ro

Due to continual product development, LCM Systems Ltd reserves the right to alter product specifications without prior notice.

Issue No. 4

Issue date: 08/11/2021
APPROVED
(unapproved if printed)